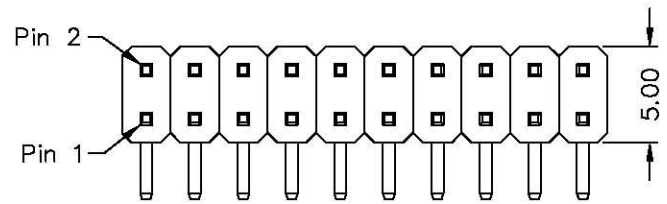


1 2 3 4 5 6 7 8

A



MATERIAL
Contact Pin : Brass

SPECIFICATION
Current Rate : 3 AMP
Insulation Resistance : 5000MΩMin. at DC 500V
Contact Resistance : 20mΩMax. at DC 100mA
Dielectric Voltage : AC 500V for one minute
Operation Temperature : -40°C to + 105°C

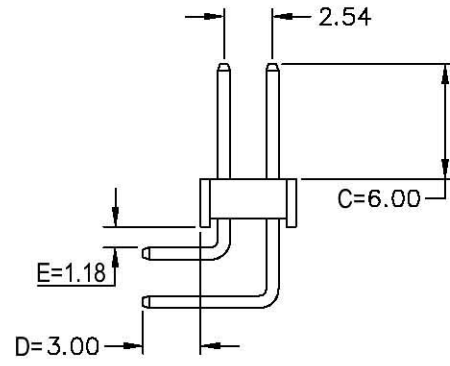
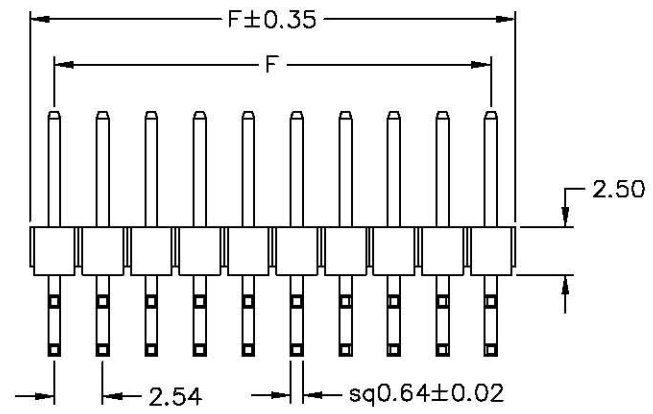
A

B

B

C

C



POLES	DIM F	POLES	DIM F
2	2.54	21	50.80
3	5.08	22	53.34
4	7.62	23	55.88
5	10.16	24	58.42
6	12.70	25	60.96
7	15.24	26	63.50
8	17.78	27	66.04
9	20.32	28	68.58
10	22.86	29	71.12
11	25.40	30	73.66
12	27.94	31	76.20
13	30.48	32	78.74
14	33.02	33	81.28
15	35.56	34	83.82
16	38.10	35	86.36
17	40.64	36	88.90
18	43.18	37	91.44
19	45.72	38	93.98
20	48.26	39	96.52
		40	99.06

D

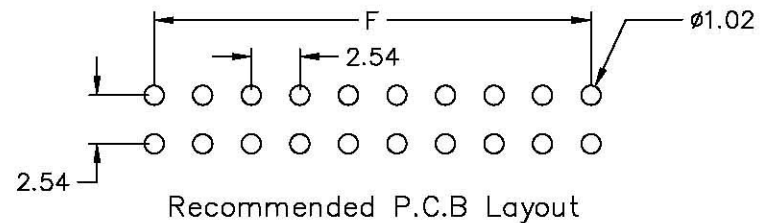
D

E

E

F

F



G

G

H

H

APPD. 核准 DWG. 製圖 DATE 制表日	RoHS Compliant	HSM 玄茂科技股份有限公司 HSUAN MAO TECHNOLOGY CO., LTD.	
		PART NAME 品名 2.54mm PIN HEADER DUAL ROW RIGHT ANGLE TYPE (C=6mm D=3mm E=1.18mm) ROHS LOW-LEAD	
SCALE 比例 參考	TOLERANCE 容許公差 .0 =±.30 .00 =±.20 ANG. =±3°	PART NO. 料號 C2200-XXBRXR0R	
UNIT 單位 M M	SIZE. 紙張尺寸 A 4	PAGE 張數 1 OF 1	
REV. 版本 A	1 OF 1		

1 2 3 4 5 6 7 8